



# SLASH RESISTANT CLOTHING

**CATALOGUE 2024**

Preventing cuts to  
arteries, rapid blood loss,  
subsequent shock and  
fatalities



# Contents

02 Introduction – SlashPRO® Slash Resistant Clothing

03 About Cut-Tex® PRO

## UPPER BODY

04 **100123** - SlashPRO® Slash Resistant Harrington Jacket

05 **100115** - SlashPRO® Slash Resistant UBAC Shirt

06 **100102** - SlashPRO® Slash Resistant Hoodie with Kangaroo Front Pocket

07 **100117** - SlashPRO® Slash Resistant Turtleneck Jacket

08 **100108** - SlashPRO® Slash Resistant V-Neck T-Shirt

09 **100109** - SlashPRO® Slash Resistant V-Neck Sweatshirt

10 **100107** - SlashPRO® Slash Resistant Turtleneck Sweatshirt with Thumbholes

## LOWER BODY

11 **200102** - SlashPRO® Slash Resistant Long Johns

## NECK & HEAD

12 **100110** - SlashPRO® Slash Resistant Neck Guard

13 **100121** - SlashPRO® Slash Resistant Balaclava

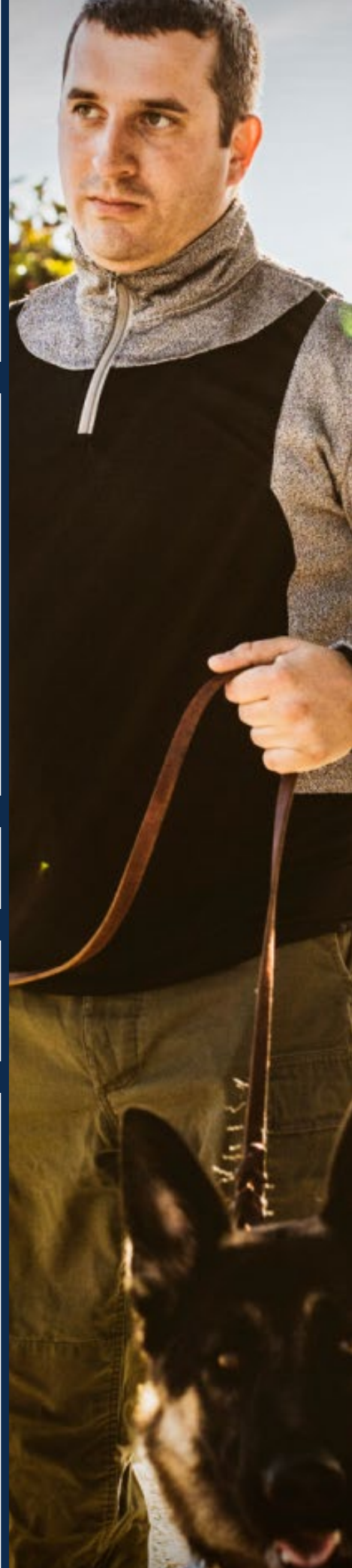
## GLOVES

14 **300102** - SlashPRO® Slash Resistant Gloves - Ares

15 **300110** - SlashPRO® Slash Resistant Gloves - Hera

16 **300116** - SlashPRO® Slash Resistant Gloves - Titan

17 Contact



# SlashPRO® Slash Resistant Clothing

The risk of being slashed with an edged weapon is a harsh reality for those working for homeland security agencies, prisons and correctional facilities and within the private security sector.

Slash related injuries can often lead to rapid blood loss, subsequent shock and ultimately death, this is not to mention any long-term psychological trauma inflicted in case the injured person is surviving such assault.

There is no question about it, the number of assaults on frontline professionals are on the rise – so it pays to protect staff against the very worst-case scenarios. **SlashPRO® Slash Resistant Clothing** effectively helps to reduce the risks of slash related injuries. All garments offer BS EN 388:2016 Blade Cut Resistance Level E or Level 5 (the highest possible) based on the previous EN 388:2003 standard.

Please note, based on extensive research we know that more or less 100% of attackers with a knife will most likely aim to stab the other person.

## Why is SlashPRO® Clothing So Important?

- In March 2023 there were just over **40,000 assaults on police officers** in England and Wales (including British Transport Police). Of which 29,308 were crimes of “assault without injury on a constable”. 11,022 crimes of “assault with injury on a constable” were recorded across all forces.
- According to FBI statistics, **43,649** officers were assaulted while performing their duties in 2021. Of these, 2.3% (1,000 officers) were **attacked with knives** or other cutting instruments.
- According to Safety in Custody Statistics, England and Wales: In the 12 months to June 2023, the rate of assaults on prison staff was 96 assaults per 1,000 prisoners (**7,908 assaults on staff**), up 1% from the 12 months to June 2022. In the latest quarter the number of assaults on staff increased by 13% to 2,222 incidents.

However, due to the motions and movements of both parties, the majority of wounds are in fact slashing wounds.

Many professionals incl medical staff conclude and/or report a ‘knife wound’ as ‘stab wound’. This is unfortunately not the case and further education is needed. Ian Horsfall and Mathew Arnold, of the Impact and Armour Group within the Department of Engineering and Applied Science at Cranfield University (Defence Academy of the United Kingdom) wrote a comprehensive piece on ‘Protecting From Slash Knife Attacks’. A clear statement in this article reads:

“A retrospective survey of hospital admissions data that contributed to the development of the standard suggested that 63 % of wounds attributable to sharp edged weapons were slash events.”

**Robert Kaiser, CEO**  
**PPSS Group**



# About Cut-Tex® PRO



Cut-Tex® PRO is an ultra-high performance cut, bite and slash resistant fabric, comfortable to wear, fully machine washable and of truly exceptional strength and durability - making it the ideal material for SlashPRO® Slash Resistant Clothing.

**As you can see below, Cut-Tex® PRO performs very highly in all cut, abrasion, tear and puncture tests:**

## Cut-Tex® PRO Performance Chart

➤ **Cut Resistance - ANSI/ISEA 105-2016 Blade Cut Resistance Levels A1-A9**



➤ **Cut Resistance - EN ISO 13997 (TDM-100 Test)**



➤ **Tear Resistance - EN 388:2016 Tear Resistance Levels 1-4**



➤ **Puncture Resistance - EN 388:2016 Puncture Resistance Levels 1-4**



➤ **Abrasion Resistance - EN 388:2016 Abrasion Resistance Levels 1-4**





# SlashPRO® Slash Resistant Harrington Jacket

Experience discreet protection with SlashPRO® Slash Resistant Harrington Jacket. Manufactured using Cut-Tex® PRO fabric and high performance laminated breathable Polyester offering absolutely outstanding, tested and certified levels of cut, abrasion and tear resistance.



Model #: 100123

[SHOP NOW](#)

**NOW AVAILABLE | PRE-ORDER!**

### Features and Benefits

- Garment fully lined with Cut-Tex® PRO providing excellent cut and slash resistance
- Zipped Breast Pocket and 2 additional Zipped Side Pockets
- Detachable Zip Hood
- Shower Resistant
- Breathable Polyester
- 100% latex free

### Who Is This Product Suitable For?

Professionals working within these sectors:

- Surveillance Teams
- Law Enforcement
- Covert Operations
- Corrections / Prison Service
- Immigration
- Customs
- Border Control
- Private Security & Military Contractors
- Civil Enforcement

### Inner Cut Resistant Fabric

Level

<b>Material</b>	
100% Cut-Tex PRO®	
<b>Cut Resistance</b>	
<b>EN 388:2016</b> (TDM-100 Test)	<b>E</b>
<b>ANSI/ISEA 105-2016</b>	<b>A5</b>
<b>EN 388:2016</b>	
<b>Tear</b> Resistance	<b>4</b>
<b>Puncture</b> Resistance	<b>4</b>
<b>Abrasion</b> Resistance	<b>3</b>
<b>Dimensional Stability Test</b>	
Achieved excellent results	
<b>Place of Manufacture</b>	
UK - CE PPE Regulation (EU) 2016/425	

### High Performance Outer Fabric

<b>Material</b>	
100% Polyester Fully Breathable High Tear Strength Shower Resistant	
<b>Sizes</b>	
S - 3XL	
<b>Colour</b>	
Black	■
<b>Clothing Care</b>	
Machine washable up to 40° Celsius using non biological washing powder	

Description	S	M	L	XL	2XL	3XL
Chest (inches)	38-40"	40-42"	42-44"	44-46"	46-48"	48-50"
Chest (cm)	92-102	102-107	107-112	112-117	117-120	120-127

All measurements are taken flat in centimetres, unless indicated with C.  
All measurements are approximate and offered as a guideline only.  
C = Circumference measurement.





# SlashPRO® Slash Resistant UBAC Shirt

SlashPRO® Slash Resistant UBAC Shirts are manufactured using Cut-Tex® PRO fabric - offering absolutely outstanding, tested and certified levels of cut, abrasion and tear resistance - providing an effective shield and protects areas often unguarded by common body armour e.g. key arteries from laceration and subsequent rapid blood loss.



Model #: 100115

**SHOP NOW**

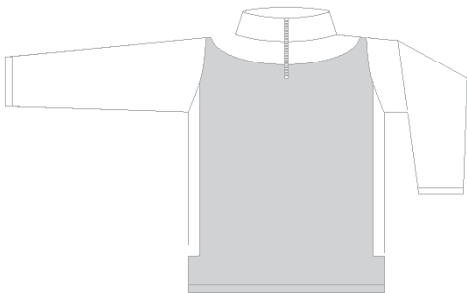
### Features and Benefits

- Offering comfortable yet effective cut protection to the radial artery, brachial artery, carotid artery and axillary artery whilst wearing body armour. Laceration of either of these arteries can lead to rapid blood loss and potential death.
- Two upper arm pockets (for small notepad and pens) with Velcro for rank patches, blood patches or other attachments
- Machine washable
- Thumb loops to keep sleeves in place
- 100% latex free

### Who Is This Product Suitable For?

Professionals working within these sectors:

- Law Enforcement
- Military
- Corrections / Prison Service
- Immigration
- Customs
- Border Control
- Private Security & Military Contractors
- Civil Enforcement



	Level
<b>Cut Resistance</b>	
EN 388:2016 (TDM-100 Test)	E
ANSI/ISEA 105-2016	A5
<b>EN 388:2016</b>	
Tear Resistance	4
Puncture Resistance	4
Abrasion Resistance	3
<b>Dimensional Stability Test</b>	
Achieved excellent results	
<b>Material Content</b>	
100% Cut-Tex® PRO + 100% Polyester	
<b>Sizes</b>	
S - 3XL	
<b>Colour</b>	
Grey	
<b>Clothing Care</b>	
Machine washable up to 40° Celsius	
<b>Place of Manufacture</b>	
UK - CE PPE Regulation (EU) 2016/425	

Description	S	M	L	XL	2XL	3XL
Chest (inches)	38-40"	40-42"	42-44"	44-46"	46-48"	48-50"
Chest (cm)	92-102	102-107	107-112	112-117	117-120	120-127

All measurements are taken flat in centimetres, unless indicated with C.  
All measurements are approximate and offered as a guideline only.  
C = Circumference measurement. † = Length from neck point to hem.





# SlashPRO® Slash Resistant Hoodie with Kangaroo Front Pocket

SlashPRO® Slash Resistant Hoodies are manufactured using Cut-Tex® PRO - offering absolutely outstanding, tested and certified levels of cut, abrasion and tear resistance.



Model #: 100102

[SHOP NOW](#)

### Features and Benefits

- Cut-Tex® PRO used on the entire garment providing excellent cut and slash resistance
- 100% latex free

### Who Is This Product Suitable For?

Professionals working within these sectors:

- Mental Health Care
- Special Needs
- Special Education
- Challenging Behaviour
- Learning Disabilities
- Autism



	Level
<b>Cut Resistance</b>	
EN 388:2016 (TDM-100 Test)	E
ANSI/ISEA 105-2016	A5
<b>EN 388:2016</b>	
Tear Resistance	4
Puncture Resistance	4
Abrasion Resistance	3
<b>Dimensional Stability Test</b>	
Achieved excellent results	
<b>Material Content</b>	
100% Cut-Tex® PRO + 100% Polyester	
<b>Sizes</b>	
S - 3XL	
<b>Colour</b>	
Grey	
<b>Clothing Care</b>	
Machine washable up to 40° Celsius	
<b>Place of Manufacture</b>	
UK - CE PPE Regulation (EU) 2016/425	

Description	S	M	L	XL	2XL	3XL
Chest (inches)	38-40"	40-42"	42-44"	44-46"	46-48"	48-50"
Chest (cm)	92-102	102-107	107-112	112-117	117-120	120-127

All measurements are taken flat in centimetres.  
All measurements are approximate and offered as a guideline only.





# SlashPRO® Slash Resistant Turtleneck Jacket

SlashPRO® Slash Resistant Jackets are manufactured using Cut-Tex® PRO fabric - offering absolutely outstanding, tested and certified levels of cut, abrasion and tear resistance.



Model #: 100117

**SHOP NOW**

### Features and Benefits

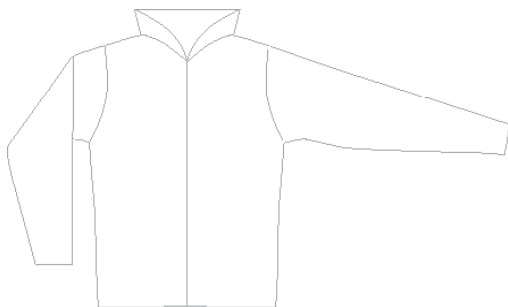
- Cut-Tex® PRO used on the entire garment providing excellent cut and slash resistance
- High neck prevents neck and vertebral arteries from being exposed
- Zipped front makes this garment more user friendly
- 100% latex free

### Who Is This Product Suitable For?

Professionals working within these sectors:

- Law Enforcement
- Military
- Corrections / Prison Service
- Immigration
- Customs
- Border Control
- Private Security & Military Contractors
- Civil Enforcement

	Level
<b>Cut Resistance</b>	
EN 388:2016 (TDM-100 Test)	E
ANSI/ISEA 105-2016	A5
<b>EN 388:2016</b>	
Tear Resistance	4
Puncture Resistance	4
Abrasion Resistance	3
<b>Dimensional Stability Test</b>	
Achieved excellent results	
<b>Material Content</b>	
100% Cut-Tex® PRO + 100% Polyester	
<b>Sizes</b>	
S - 5XL	
<b>Colour</b>	
Grey	
<b>Clothing Care</b>	
Machine washable up to 40° Celsius	
<b>Place of Manufacture</b>	
UK - CE PPE Regulation (EU) 2016/425	



Description	S	M	L	XL	2XL	3XL	4XL	5XL
Chest (inches)	38-40"	40-42"	42-44"	44-46"	46-48"	48-50"	50-52"	52-54"
Chest (cm)	92-102	102-107	107-112	112-117	117-120	120-127	127-132	132-137

All measurements are taken flat in centimetres, unless indicated with C.  
All measurements are approximate and offered as a guideline only.  
C = Circumference measurement.







# SlashPRO® Slash Resistant T Shirt

SlashPRO® Slash Resistant T-Shirts are manufactured using Cut-Tex® PRO fabric - offering absolutely outstanding, tested and certified levels of cut, abrasion and tear resistance.



Model #: 100108

**SHOP NOW**

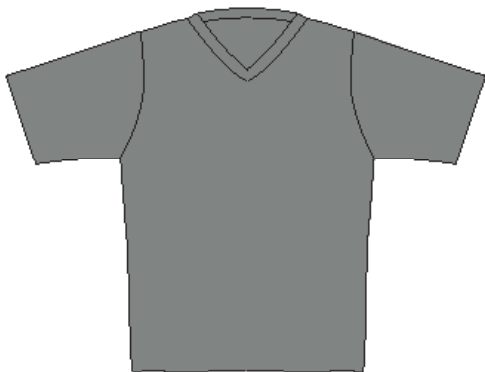
### Features and Benefits

- Cut-Tex® PRO used on the entire garment providing excellent cut and slash resistance
- 100% latex free

### Who Is This Product Suitable For?

Professionals working within these sectors:

- Law Enforcement
- Military
- Corrections / Prison Service
- Immigration
- Customs
- Border Control
- Private Security & Military Contractors
- Civil Enforcement



	Level
<b>Cut Resistance</b>	
EN 388:2016 (TDM-100 Test)	E
ANSI/ISEA 105-2016	A5
<b>EN 388:2016</b>	
Tear Resistance	4
Puncture Resistance	4
Abrasion Resistance	3
<b>Dimensional Stability Test</b>	
Achieved excellent results	
<b>Material Content</b>	
100% Cut-Tex® PRO + 100% Polyester	
<b>Sizes</b>	
S - 3XL	
<b>Colour</b>	
Grey	<input checked="" type="checkbox"/>
<b>Clothing Care</b>	
Machine washable up to 40° Celsius	
<b>Place of Manufacture</b>	
UK - CE PPE Regulation (EU) 2016/425	

**MOQs APPLY FOR THIS PRODUCT**

Description	S	M	L	XL	2XL	3XL
Chest (inches)	38-40"	40-42"	42-44"	44-46"	46-48"	48-50"
Chest (cm)	92-102	102-107	107-112	112-117	117-120	120-127

All measurements are taken flat in centimetres.  
All measurements are approximate and offered as a guideline only.





# SlashPRO® Slash Resistant Sweatshirt (Long Sleeve)

SlashPRO® Slash Resistant Sweatshirts are manufactured using Cut-Tex® PRO fabric - offering absolutely outstanding, tested and certified levels of cut, abrasion and tear resistance.



Model #: 100109

[SHOP NOW](#)

### Features and Benefits

- Cut-Tex® PRO used on the entire garment providing excellent cut and slash resistance
- 100% latex free

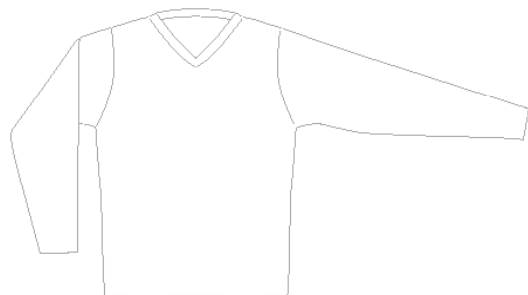
### Who Is This Product Suitable For?

Professionals working within these sectors:

- Law Enforcement
- Military
- Corrections / Prison Service
- Immigration
- Customs
- Border Control
- Private Security & Military Contractors
- Civil Enforcement

	Level
<b>Cut Resistance</b>	
<b>EN 388:2016</b> (TDM-100 Test)	<b>E</b>
<b>ANSI/ISEA 105-2016</b>	<b>A5</b>
<b>EN 388:2016</b>	
<b>Tear Resistance</b>	<b>4</b>
<b>Puncture Resistance</b>	<b>4</b>
<b>Abrasion Resistance</b>	<b>3</b>
<b>Dimensional Stability Test</b>	
Achieved excellent results	
<b>Material Content</b>	
100% Cut-Tex® PRO + 100% Polyester	
<b>Sizes</b>	
S - 3XL	
<b>Colour</b>	
Grey	<input checked="" type="checkbox"/>
<b>Clothing Care</b>	
Machine washable up to 40° Celsius	
<b>Place of Manufacture</b>	
UK - CE PPE Regulation (EU) 2016/425	

**MOQs APPLY FOR THIS PRODUCT**



Description	S	M	L	XL	2XL	3XL
Chest (inches)	38-40"	40-42"	42-44"	44-46"	46-48"	48-50"
Chest (cm)	92-102	102-107	107-112	112-117	117-120	120-127

All measurements are taken flat in centimetres.  
All measurements are approximate and offered as a guideline only.





# SlashPRO® Slash Resistant Turtleneck Sweatshirt with Thumbholes

SlashPRO® Slash Resistant Sweatshirts are manufactured using Cut-Tex® PRO fabric - offering absolutely outstanding, tested and certified levels of cut, abrasion and tear resistance.



Model #: 100107

[SHOP NOW](#)

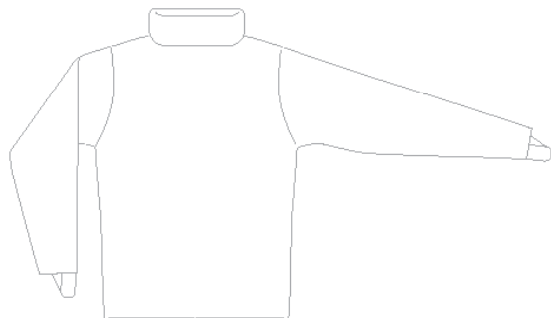
### Features and Benefits

- Cut-Tex® PRO used on the entire garment providing excellent cut and slash resistance
- High neck prevents neck and vertebral arteries from being exposed
- Thumbhole sleeves prevent the wrist and radial artery from being exposed
- 100% latex free

### Who Is This Product Suitable For?

Professionals working within these sectors:

- Law Enforcement
- Military
- Corrections / Prison Service
- Immigration
- Customs
- Border Control
- Private Security & Military Contractors
- Civil Enforcement



Level

<b>Cut Resistance</b>	
EN 388:2016 (TDM-100 Test)	E
ANSI/ISEA 105-2016	A5
<b>EN 388:2016</b>	
Tear Resistance	4
Puncture Resistance	4
Abrasion Resistance	3
<b>Dimensional Stability Test</b>	
Achieved excellent results	
<b>Material Content</b>	
100% Cut-Tex® PRO + 100% Polyester	
<b>Sizes</b>	
S - 3XL	
<b>Colour</b>	
Grey	<input checked="" type="checkbox"/>
<b>Clothing Care</b>	
Machine washable up to 40° Celsius	
<b>Place of Manufacture</b>	
UK - CE PPE Regulation (EU) 2016/425	

**MOQs APPLY FOR THIS PRODUCT**

Description	S	M	L	XL	2XL	3XL
Chest (inches)	38-40"	40-42"	42-44"	44-46"	46-48"	48-50"
Chest (cm)	92-102	102-107	107-112	112-117	117-120	120-127

All measurements are taken flat in centimetres.  
All measurements are approximate and offered as a guideline only.





# SlashPRO® Slash Resistant Long Johns

SlashPRO® Slash Resistant Long Johns are manufactured using Cut-Tex® PRO - offering absolutely outstanding, tested and certified levels of cut, abrasion and tear resistance.



Model #: 200102

**SHOP NOW**

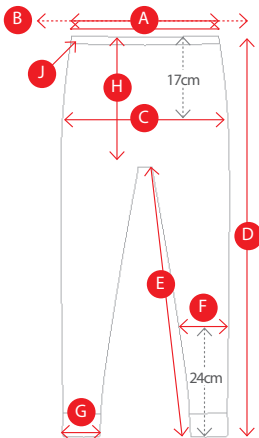
### Features and Benefits

- Excellent cut and slash protection for the lower part of the body
- Slim fit
- Adjustable cord
- 100% latex free

### Who Is This Product Suitable For?

Professionals working within these sectors:

- Law Enforcement
- Military
- Corrections / Prison Service
- Immigration
- Customs
- Border Control
- Private Security & Military Contractors
- Civil Enforcement



	Level
<b>Cut Resistance</b>	
EN 388:2016 (TDM-100 Test)	E
ANSI/ISEA 105-2016	A5
<b>EN 388:2016</b>	
Tear Resistance	4
Puncture Resistance	4
Abrasion Resistance	3
<b>Dimensional Stability Test</b>	
Achieved excellent results	
<b>Material Content</b>	
100% Cut-Tex® PRO + 100% Polyester	
<b>Sizes</b>	
S - 3XL	
<b>Colour</b>	
Grey	
<b>Clothing Care</b>	
Machine washable up to 40° Celsius	
<b>Place of Manufacture</b>	
UK - CE PPE Regulation (EU) 2016/425	

Description	S	M	L	XL	2XL	3XL
Waist (inches)	26 1/2-30"	30 1/2-34"	34 1/2-38"	38 1/2-42"	42 1/2-46"	46 1/2-50"
Waist (cm)	67-76	77-86	87-96	97-106	107-116	117-126
Inside Leg Length (Inches)	32"	32"	32 1/2"	32 1/2"	33"	33"
Inside Leg Length (CM)	81	81	82.5	82.5	84	84

All measurements are taken flat in centimetres.  
All measurements are approximate and offered as a guideline only.  
\*Including waistband.





# SlashPRO® Slash Resistant Neck Guard

SlashPRO® Slash Resistant Neck Guards are manufactured using Cut-Tex® PRO fabric which acts as an effective shield and protects areas often unguarded by common body armour.



Model #: 100110

**SHOP NOW**

### Features and Benefits

- Offering comfortable yet effective cut protection to the carotid artery, an area even exposed whilst wearing any type of body armour. Laceration of this artery can lead to rapid blood loss and potential death.
- Wrapped in black polyester
- Folding down collar
- Machine washable
- 100% latex free

### Who Is This Product Suitable For?

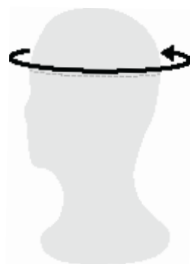
Professionals working within these sectors:

- Law Enforcement
- Military
- Corrections / Prison Service
- Immigration
- Customs
- Border Control
- Private Security & Military Contractors
- Civil Enforcement

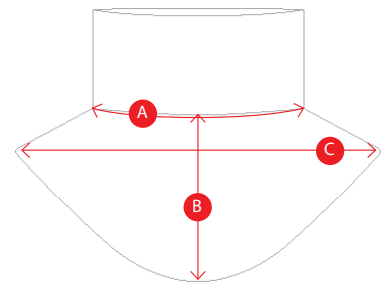
### Find Your Size

Please use this chart as a guide. Measure the circumference of your head just above the brow line.

Size	Head circumference
S	50-52cm
M	53-55cm
L	56-58cm
XL	59-61cm
XXL	62-64cm



Size	A: Neck side point to point	B: Centre front length	C: Shoulder width
S	23cm	18cm	38cm
M	24cm	19cm	39cm
L	25cm	20cm	40cm
XL	26cm	21cm	41cm
XXL	27cm	22cm	42cm



	Level
<b>Cut Resistance</b>	
EN 388:2016 (TDM-100 Test)	E
ANSI/ISEA 105-2016	A5
<b>EN 388:2016</b>	
Tear Resistance	4
Puncture Resistance	4
Abrasion Resistance	3
<b>Dimensional Stability Test</b>	
Achieved excellent results	
<b>Material Content</b>	
100% Cut-Tex® PRO + 100% Polyester	
<b>Sizes</b>	
S - 2XL	
<b>Colour</b>	
Black	■
<b>Clothing Care</b>	
Machine washable up to 40° Celsius	
<b>Place of Manufacture</b>	
UK - CE PPE Regulation (EU) 2016/425	

All measurements are taken flat in centimetres.  
All measurements are approximate and offered as a guideline only.  
\*Length from neck point to hem. \*\*Fully open





# SlashPRO® Slash Resistant Balaclava

SlashPRO® Slash Resistant Balaclavas are manufactured using Cut-Tex® PRO fabric - offering absolutely outstanding, tested and certified levels of cut, abrasion and tear resistance.



Model #: 100121

**SHOP NOW**

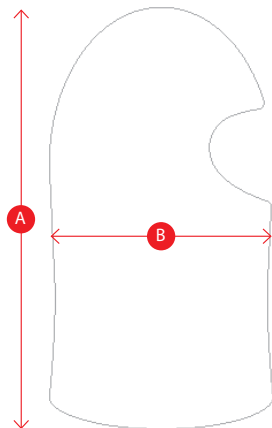
### Features and Benefits

- Cut-Tex® PRO used on the entire garment providing excellent cut and slash resistance
- Ideal for forced entry operations and riot teams
- Effectively protecting Carotid Artery
- 100% latex free

### Who Is This Product Suitable For?

Professionals working within these sectors:

- Law Enforcement
- Military
- Corrections / Prison Service
- Immigration
- Customs
- Border Control
- Private Security & Military Contractors
- Civil Enforcement



Level

### Cut Resistance

**EN 388:2016** (TDM-100 Test)  
**ANSI/ISEA 105-2016**

**E**  
**A5**

### EN 388:2016

**Tear** Resistance  
**Puncture** Resistance  
**Abrasion** Resistance

**4**  
**4**  
**3**

### Dimensional Stability Test

Achieved excellent results

### Material Content

100% Cut-Tex® PRO + 100% Polyester

### Sizes

S - 2XL

### Colour

Grey



### Clothing Care

Machine washable up to 40° Celsius

### Place of Manufacture

**UK** - CE PPE Regulation (EU) 2016/425

	Description	S/M	L/XL	2XL/3XL
A	Height	43	45	47
B	Width	24	26	28

All measurements are taken flat in centimetres.  
All measurements are approximate and offered as a guideline only.





# SlashPRO® Slash Resistant Gloves - Ares

SlashPRO® Gloves (Ares) are manufactured using Cut-Tex® PRO fabric - offering absolutely outstanding, tested and certified levels of cut, abrasion and tear resistance.

**For additional needle protection please contact us**



**Model #: 300102**

**SHOP NOW**

### Features and Benefits

- Cut-Tex® PRO provides excellent cut resistance to BS EN 388:2016 Level 5
- Lightweight nylon and elastane blend on the back of the hand
- Velcro strap keeps the gloves secure around the wrist
- Synthetic non-slip palm grip with reinforced palms and fingertips

### Who Is This Product Suitable For?

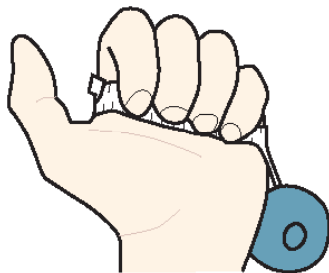
Professionals working within these sectors:

- Law Enforcement
- Military
- Corrections / Prison Service
- Immigration
- Customs
- Border Control
- Private Security & Military Contractors
- Civil Enforcement

### 1. Find Your Size

Wrap a tailor's measuring tape around your dominant hand just below the knuckles, excluding your thumb, and make a fist. This is your 'hand width'.

EU Glove size	US Glove size	Inches	CMs
6	XS	6-7	15-17
7	S	7-8	17-20
8	M	8-9	20-22
9	L	9-10	22-25
10	XL	10-11	25-27
11	2XL	11+	28+

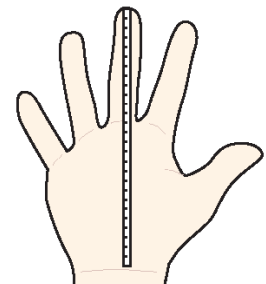


	Level
<b>Cut Resistance</b>	
<b>EN 388:2016</b> (TDM-100 Test)	<b>E</b>
<b>ANSI/ISEA 105-2016</b>	<b>A5</b>
<b>EN 388:2016</b>	
<b>Tear Resistance</b>	<b>4</b>
<b>Puncture Resistance</b>	<b>4</b>
<b>Abrasion Resistance</b>	<b>3</b>
<b>Dimensional Stability Test</b>	
Achieved excellent results	
<b>Material Content</b>	
100% Cut-Tex® PRO + 100% Polyester	
<b>Sizes</b>	
S - 2XL	
<b>Colour</b>	
Black	■
<b>Clothing Care</b>	
Wipe clean	
<b>Place of Manufacture</b>	
<b>UK</b> - CE PPE Regulation (EU) 2016/425	

### 2. Find Your Hand Length

Measure from the bottom edge of your palm to the tip of your middle finger to find your 'finger length'.

EU Glove size	US Glove size	Inches	CMs
6	XS	6.5	16.5
7	S	7	18
8	M	7.5	19
9	L	8	20
10	XL	8.5	21.5
11	2XL	9	23





# SlashPRO® Slash Resistant Gloves - Hera

SlashPRO® Gloves (Hera) are manufactured using Cut-Tex® PRO fabric - offering absolutely outstanding, tested and certified levels of cut, abrasion and tear resistance.

**For additional needle protection please contact us**



**Model #: 300110**

**SHOP NOW**

### Features and Benefits

- Cut-Tex® PRO provides excellent cut resistance to BS EN 388:2016 Level 5
- Lightweight nylon and elastane blend on the back of the hand
- Elasticised wrist keeps the gloves secure around the wrist

### Who Is This Product Suitable For?

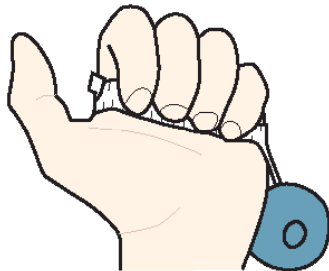
Professionals working within these sectors:

- Law Enforcement
- Military
- Corrections / Prison Service
- Immigration
- Customs
- Border Control
- Private Security & Military Contractors
- Civil Enforcement

### 1. Find Your Size

Wrap a tailor's measuring tape around your dominant hand just below the knuckles, excluding your thumb, and make a fist. This is your 'hand width'.

EU Glove size	US Glove size	Inches	CMs
6	XS	6-7	15-17
7	S	7-8	17-20
8	M	8-9	20-22
9	L	9-10	22-25
10	XL	10-11	25-27
11	2XL	11+	28+

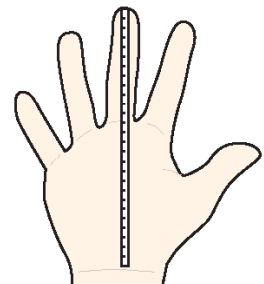


	Level
<b>Cut Resistance</b>	
<b>EN 388:2016</b> (TDM-100 Test)	<b>E</b>
<b>ANSI/ISEA 105-2016</b>	<b>A5</b>
<b>EN 388:2016</b>	
<b>Tear Resistance</b>	<b>4</b>
<b>Puncture Resistance</b>	<b>4</b>
<b>Abrasion Resistance</b>	<b>3</b>
<b>Dimensional Stability Test</b>	
Achieved excellent results	
<b>Material Content</b>	
100% Cut-Tex® PRO + 100% Polyester	
<b>Sizes</b>	
S - 2XL	
<b>Colour</b>	
Black	■
<b>Clothing Care</b>	
Wipe clean	
<b>Place of Manufacture</b>	
<b>UK</b> - CE PPE Regulation (EU) 2016/425	

### 2. Find Your Hand Length

Measure from the bottom edge of your palm to the tip of your middle finger to find your 'finger length'.

EU Glove size	US Glove size	Inches	CMs
6	XS	6.5	16.5
7	S	7	18
8	M	7.5	19
9	L	8	20
10	XL	8.5	21.5
11	2XL	9	23







# SlashPRO® Slash Resistant Gloves - Titan

SlashPRO® Gloves (Titan) are manufactured using Cut-Tex® PRO fabric - offering absolutely outstanding, tested and certified levels of cut, abrasion and tear resistance.

**For additional needle protection please contact us**



**Model #: 30016**

**SHOP NOW**

### Features and Benefits

- Cut-Tex® PRO provides excellent cut resistance to BS EN 388:2016 Level 5
- 100% Cow hide leather palm
- Carbon knuckle protection with ventilation on the fingers
- Synthetic non-slip back and palm grip
- Soft padded cuff with Velcro strap to secure around wrist

### Who Is This Product Suitable For?

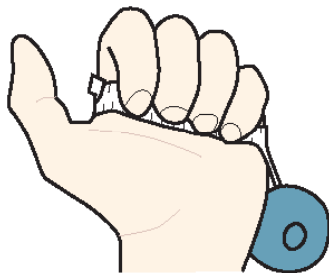
Professionals working within these sectors:

- Law Enforcement
- Military
- Corrections / Prison Service
- Immigration
- Customs
- Border Control
- Private Security & Military Contractors
- Civil Enforcement

### 1. Find Your Size

Wrap a tailor's measuring tape around your dominant hand just below the knuckles, excluding your thumb, and make a fist. This is your 'hand width'.

EU Glove size	US Glove size	Inches	CMs
6	XS	6-7	15-17
7	S	7-8	17-20
8	M	8-9	20-22
9	L	9-10	22-25
10	XL	10-11	25-27
11	2XL	11+	28+

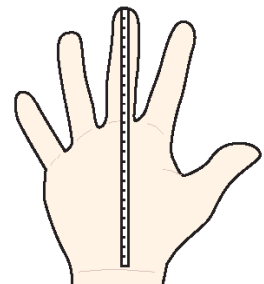


	Level
<b>Cut Resistance</b>	
<b>EN 388:2016</b> (TDM-100 Test)	<b>E</b>
<b>ANSI/ISEA 105-2016</b>	<b>A5</b>
<b>EN 388:2016</b>	
<b>Tear Resistance</b>	<b>4</b>
<b>Puncture Resistance</b>	<b>4</b>
<b>Abrasion Resistance</b>	<b>3</b>
<b>Dimensional Stability Test</b>	
Achieved excellent results	
<b>Material Content</b>	
100% Cut-Tex® PRO + 100% Polyester	
<b>Sizes</b>	
S - 2XL	
<b>Colour</b>	
Black	■
<b>Clothing Care</b>	
Wipe clean	
<b>Place of Manufacture</b>	
<b>UK</b> - CE PPE Regulation (EU) 2016/425	

### 2. Find Your Hand Length

Measure from the bottom edge of your palm to the tip of your middle finger to find your 'finger length'.

EU Glove size	US Glove size	Inches	CMs
6	XS	6.5	16.5
7	S	7	18
8	M	7.5	19
9	L	8	20
10	XL	8.5	21.5
11	2XL	9	23



# Contact Us

**SlashPRO®** Slash  
Resistant Clothing is  
part of PPSS Group

## PPSS Group

Unit 603  
Avenue D  
Thorp Arch Estate  
Wetherby  
LS23 7FS  
United Kingdom

☎ +44 (0) 1423 863 790

✉ info@slash-pro.com

🌐 www.slash-pro.com

## Follow Us



**DESIGNED &  
MANUFACTURED  
IN GREAT BRITAIN**



🌐 www.slash-pro.com

☎ +44 (0) 1423 863 790

✉ info@slash-pro.com